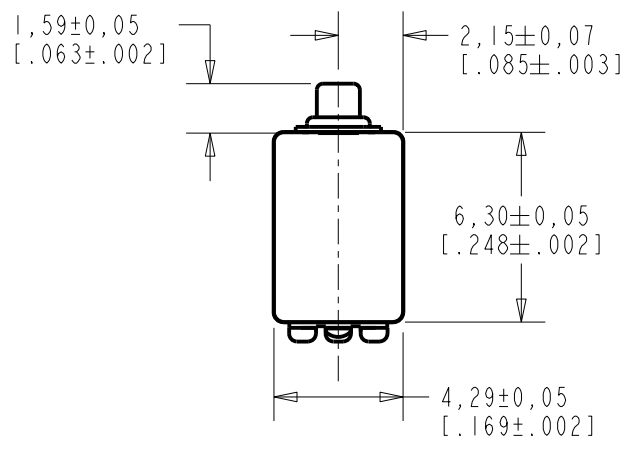


ED-30262-163

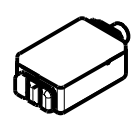
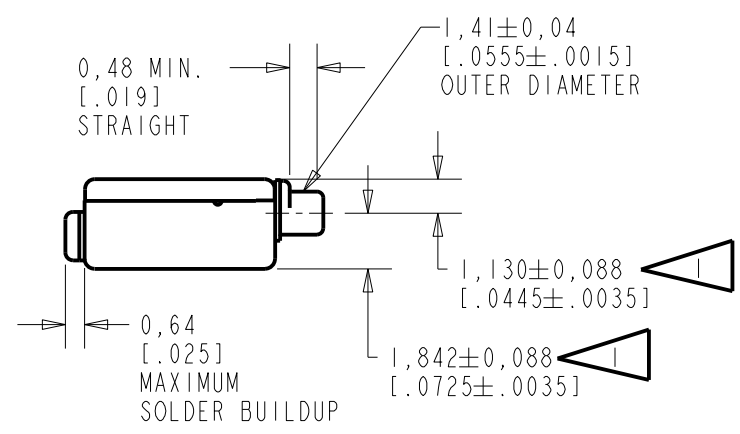
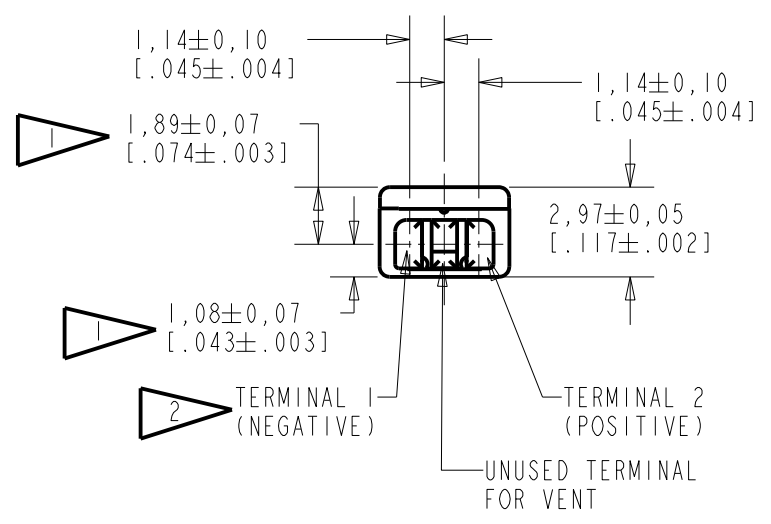
SHT 1.1



NOTE:

1 LOCATED FROM TWO SURFACES FOR CUSTOMER CONVENIENCE. ONLY APPLICABLE FROM ONE SURFACE, NOT TO BE USED TOGETHER. HORIZONTAL LOCATION FOR TERMINAL CENTERED TO ±0,17 [.007].

2 A POSITIVE GOING VOLTAGE AT TERMINAL 2 RELATIVE TO TERMINAL 1, CAUSES A DECREASE IN PRESSURE AT THE SOUND OUTLET.



SCALE 2:1

NOMINAL WEIGHT
.31 GRAM

DIMENSIONS IN MILLIMETERS [INCHES]

| Revision | C.O. # | Implementation Date | RELEASE LEVEL | REVISION |
|----------|-----------|---------------------|---------------|----------|
| A | C10112883 | 9-20-11 | Active | A |

KNOWLES ELECTRONICS
ITASCA, ILLINOIS U.S.A.

| | | |
|------------------------|-------------------------|---------------|
| SCALE: 4:1 | DR. BY: LSY | DATE: 9-22-11 |
| DO NOT SCALE DRAWING | CK. BY: GJP | DATE: 9-28-11 |
| TITLE: RECEIVER | APP. BY: GJP | DATE: 9-28-11 |
| OUTLINE DRAWING | ED-30262-163 SHT 1.1 | |

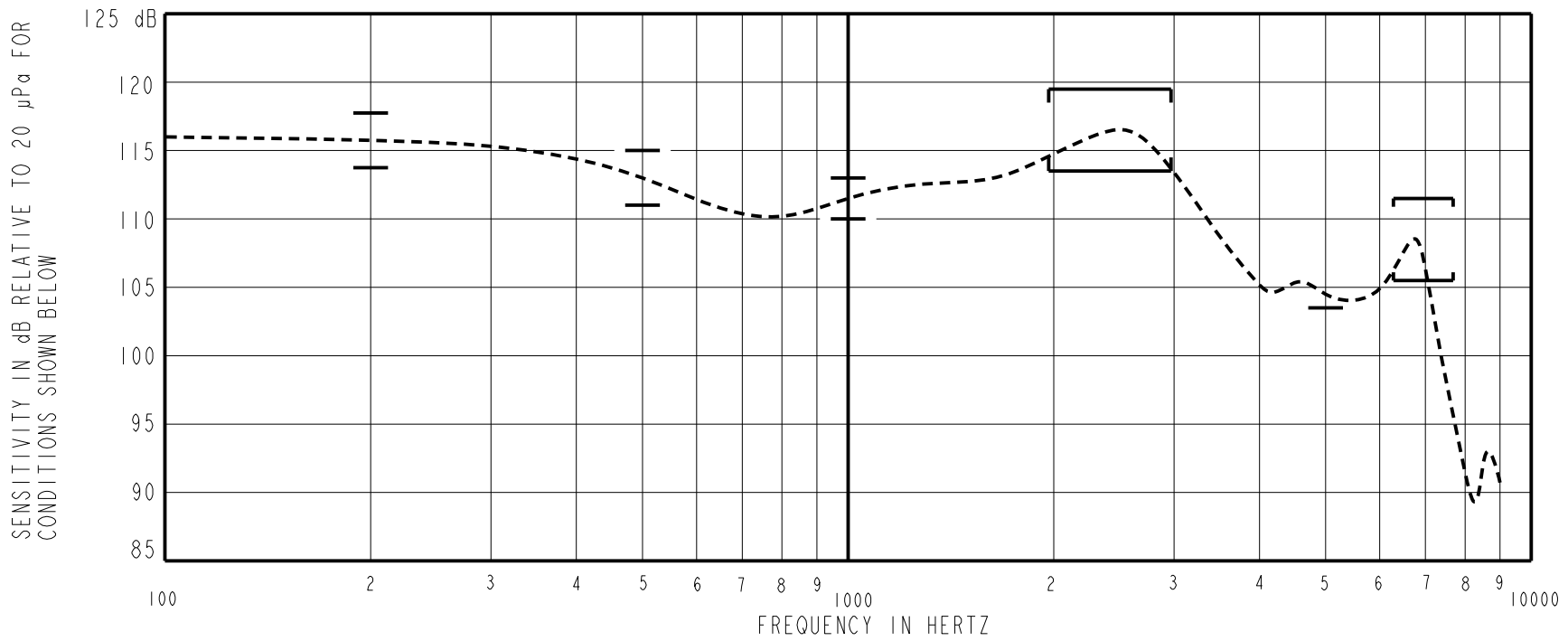
DESCRIPTION

NO DAMPING

ED-30262-163
SHEET 2.1

A BALANCED ARMATURE ED RECEIVER WITH LOW IMPEDANCE COIL AND REAR VENT OPENING ON THE CENTER PAD OF THE TERMINAL.

CONSTANT VOLTAGE DRIVE CONDITIONS (WITH VENT OPEN)



ACOUSTICAL

SENSITIVITY DEVICE WILL PRODUCE THE SPL LISTED BELOW UNDER TEST CONDITIONS DESCRIBED IN TABLE 3. NOMINAL SENSITIVITY AT 1 kHz IS dB RELATIVE TO 20µPa. ALL OTHER VALUES IN dB RELATIVE TO THE SENSITIVITY AT 1 kHz. TEST DATA MEASURED WITH VENT OPEN.

| FREQUENCY (Hz) | MINIMUM | NOMINAL | MAXIMUM |
|----------------|---------|---------|---------|
| 70 | +2.5 | +4.5 | +6.5 |
| 200 | +2.25 | +4.25 | +6.25 |
| 500 | -0.5 | +1.5 | +3.5 |
| 1000 | -1.5 | +1.5 | +1.5 |
| 1975-2975 | +2.0 | +5.0 | +8.0 |
| 5000 | -8.0 | --- | --- |
| 6300-7700 | -6.0 | -3.0 | +0.0 |

PORT LOCATION: 12C

BUZZ TEST:
LISTENING TEST CONDUCTED BETWEEN 50Hz AND 5kHz TO DETECT BUZZ
INPUT VOLTAGE DRIVE SIGNAL .101Vrms

TABLE 1.

TOTAL HARMONIC DISTORTION DEVICE WILL NOT EXCEED TOTAL HARMONIC DISTORTION LEVELS LISTED BELOW.

| FREQUENCY (Hz) | DRIVE (V RMS) | DC BIAS (MA) | LIMIT (%) |
|----------------|---------------|--------------|-----------|
| 500 | 0.285 | 0 | 10 |
| 1/3 PEAK | 0.101 | 0 | 3 |
| 1/2 PEAK | 0.101 | 0 | 3 |

TABLE 2.

TEST CONDITIONS

| | |
|------------------------|--------------------------------|
| NOMINAL SOURCE VOLTAGE | 0.101 Vrms, 0 Vdc BIAS |
| SOURCE IMPEDANCE | < 1 Ω |
| TUBING | NO TUBE, KNOWLES T8688 COUPLER |
| COUPLER CAVITY | IEC 60318-4 (IEC711) |

TABLE 3.

ELECTRICAL

| | |
|--------------------|-------------|
| DC RESISTANCE | 12.0 Ω ±10% |
| IMPEDANCE @ 500 Hz | 22.3 Ω ±20% |
| IMPEDANCE @ 1 kHz | 39.3 Ω ±20% |

TABLE 4.

ISOLATION: CASE WILL BE ELECTRICALLY ISOLATED FROM THE COIL CIRCUIT

| Revision | C.O. # | Implementation Date | RELEASE LEVEL | REVISION |
|--|-----------|---------------------|---------------|----------|
| | | | Active | A |
| A | C10112883 | 9-20-11 | | |
| WHEN TEST LIMITS ARE USED TO ESTABLISH INCOMING INSPECTION ACCEPTANCE/REJECTION CRITERIA, CORRELATION OF TEST EQUIPMENT WITH KNOWLES IS ALSO REQUIRED FOR ELIMINATION OF EQUIPMENT AND TEST METHOD VARIATION | | | DR. BY | DATE |
| TITLE: RECEIVER | | | LSY | 9-22-11 |
| | | | ED-30262-163 | |
| PERFORMANCE SPECIFICATION | | | GJP | 9-28-11 |
| | | | APP. BY | DATE |
| | | | GJP | 9-28-11 |

KNOWLES ELECTRONICS
ITASCA, ILLINOIS U.S.A.